

# Market Review & Outlook

## Third Quarter 2024

Thomas W. Verdel, CFA®  
Senior Quantitative Equity  
Portfolio Manager  
[tverdel@cavanalhill.com](mailto:tverdel@cavanalhill.com)

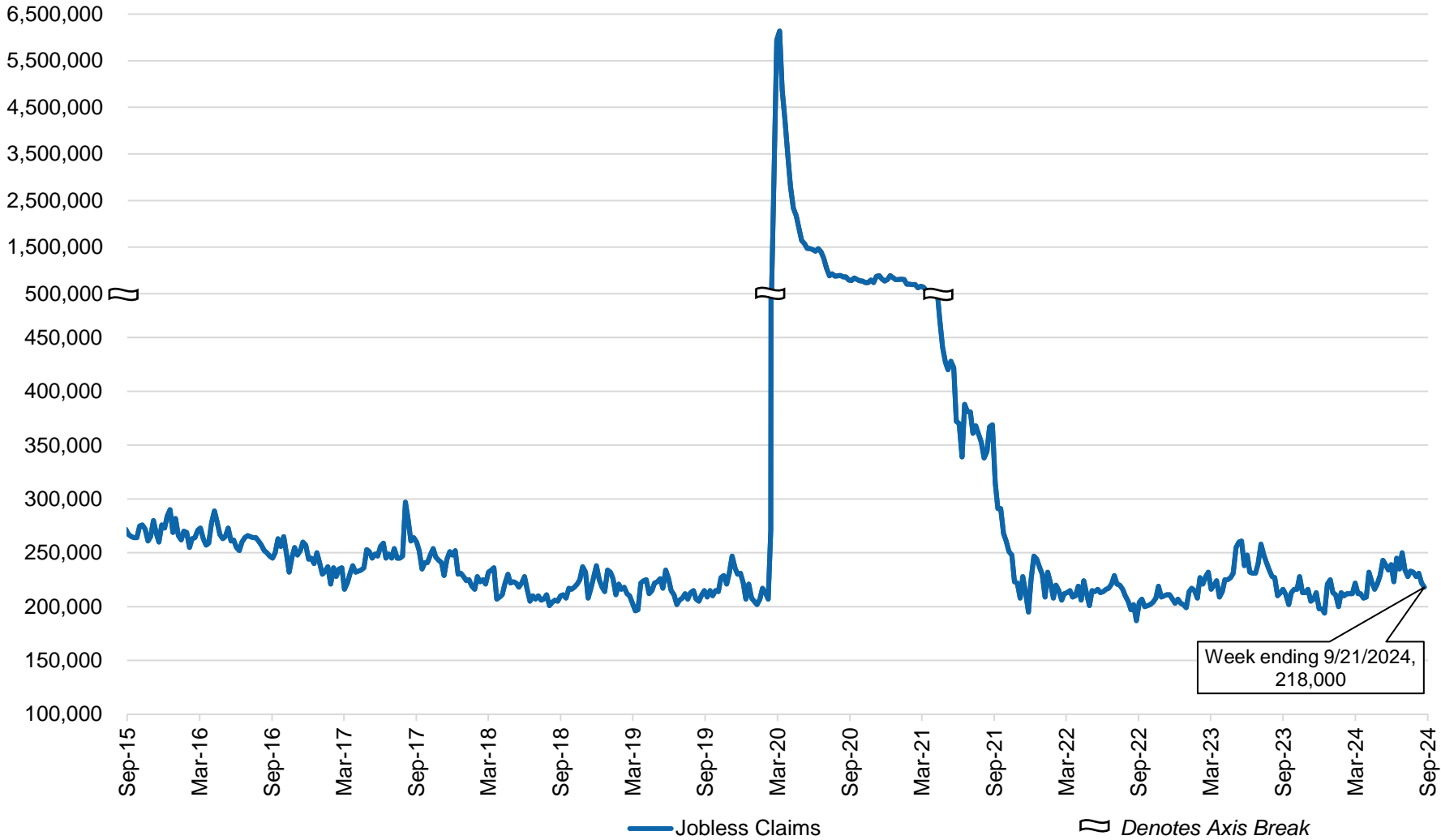
Michael Maurer, CFA®  
Senior Fixed Income  
Portfolio Manager  
[mmaurer@cavanalhill.com](mailto:mmaurer@cavanalhill.com)

Matthew Stephani, CFA®  
President, Cavanal Hill  
[mstephani@cavanalhill.com](mailto:mstephani@cavanalhill.com)

# Summary

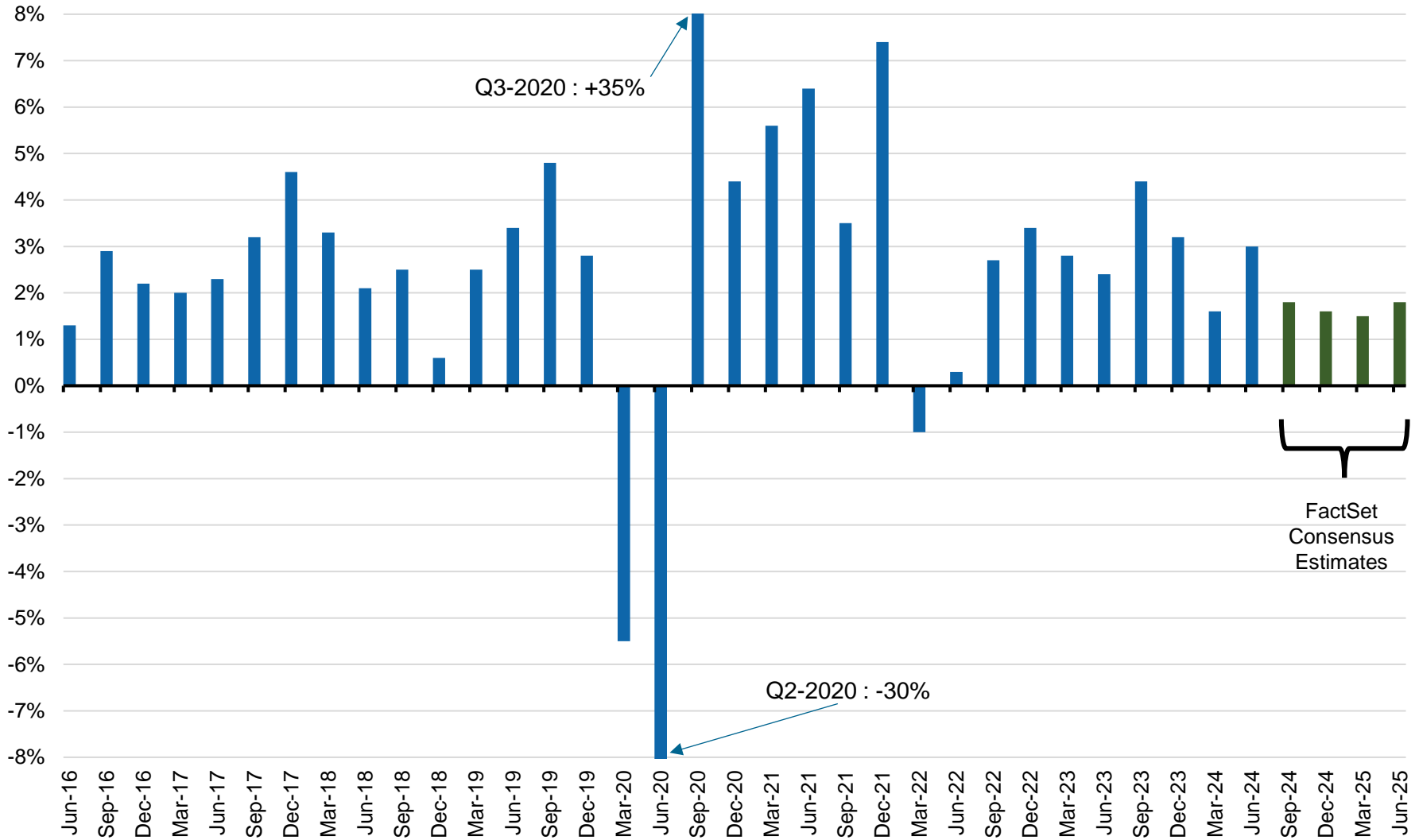
- 1** Domestic growth remains positive but may moderate in the intermediate term. The labor market has experienced some re-balancing yet is still supportive of the U.S. consumer.
- 2** Cyclical inflation rates have trended lower, with tailwinds from goods disinflation, while rent and wage inflation decline more slowly.
- 3** The Federal Reserve has begun its easing campaign, starting with a sizeable rate cut in September. The Fed will likely institute additional rate cuts in the final quarter of 2024 and into 2025.
- 4** Short-term Treasury yields fell as the prospect of rate cuts from the Fed became clearer, and the yield curve has recently un-inverted.
- 5** Stock market volatility has increased, but broad stock market performance is positive for the year. We remain invested and dedicated to our diversified approach.

# U.S. Employment : Jobless Claims



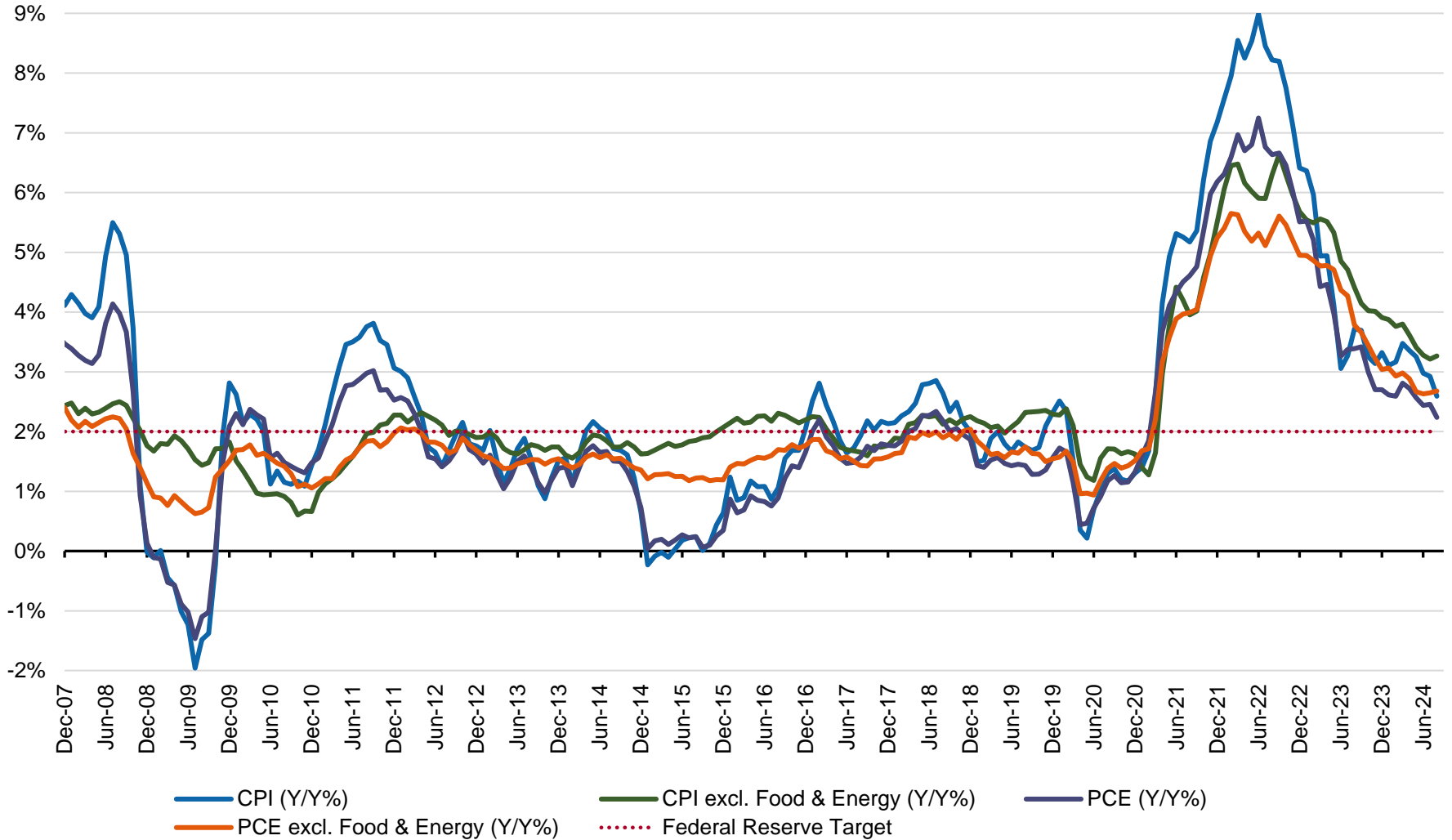
Source: U.S. Employment and Training Administration, FRED. As of 9/21/2024.

# U.S. Real GDP Growth (Q/Q Annualized % Change)



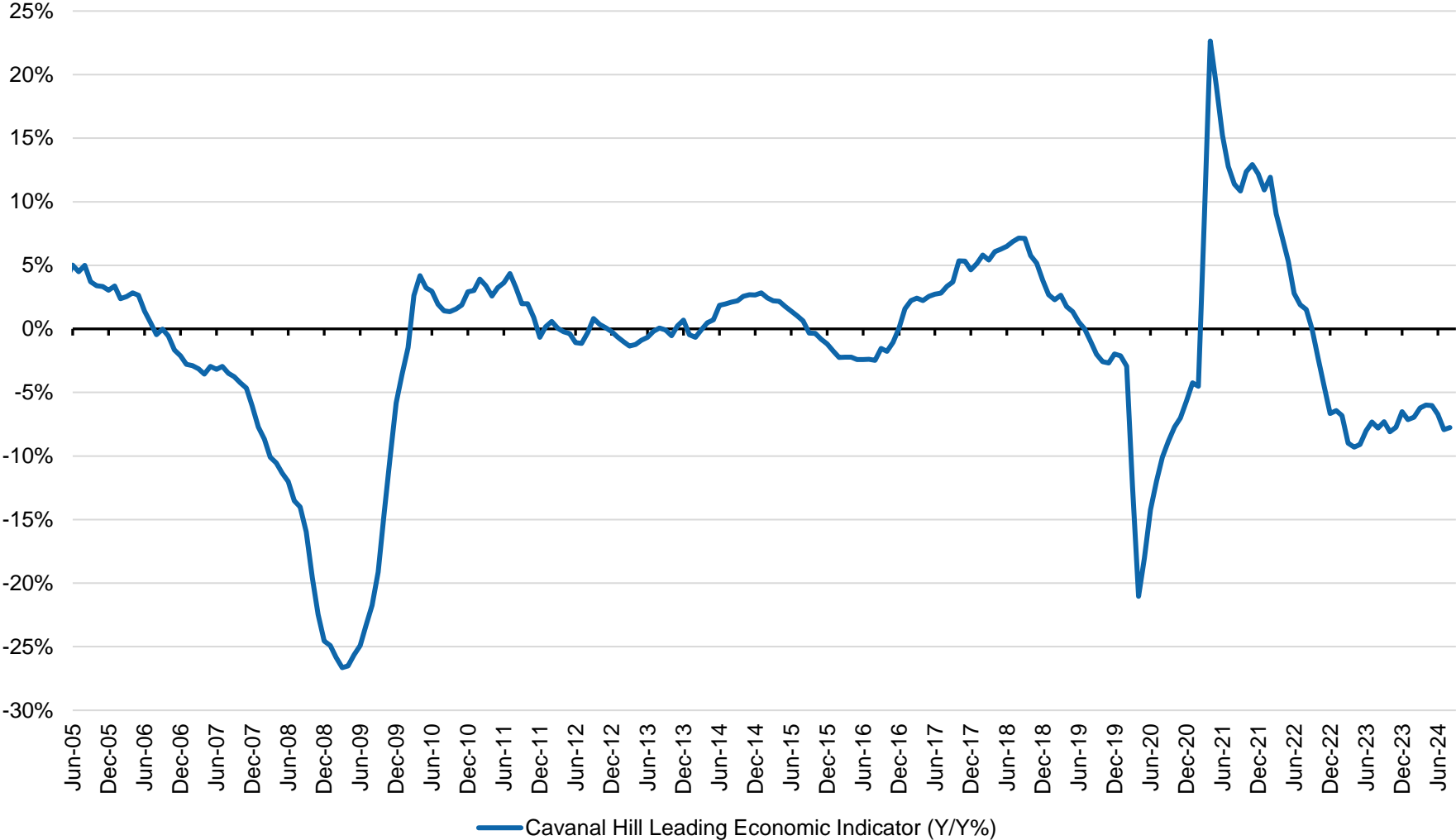
Source: U.S. Bureau of Economic Analysis, FRED, FactSet. As of 9/30/2024

# U.S. Headline and Core Inflation



Source : US Bureau of Economic Analysis, US Dept. of Labor, FactSet. As of 8/31/2024.

# Cavalan Hill Leading Economic Indicator



Source : Cavalan Hill, Bloomberg. As of 8/31/2024. <sup>2</sup>See appendix for indicator description.

# Broad Asset Classes

# Market Performance

	3Q2024	Last 12 Months
<b>Headline Index Returns</b>		
Russell 1000 Value	9.43%	27.76%
Russell 2000	9.27%	26.76%
Russell 800 MidCap	9.21%	29.33%
MSCI Emerging Markets	8.88%	26.54%
Dow Jones Industrial Average	8.72%	28.85%
MSCI EAFE	7.33%	25.38%
Barclays Global Aggregate Fixed Income	6.98%	11.99%
Barclays Global High Yield Fixed Income	6.21%	18.98%
Russell 1000	6.08%	35.68%
S&P 500	5.89%	36.35%
Barclays U.S. Aggregate Fixed Income	5.20%	11.57%
Russell 1000 Growth	3.19%	42.19%
NASDAQ Composite	2.76%	38.64%

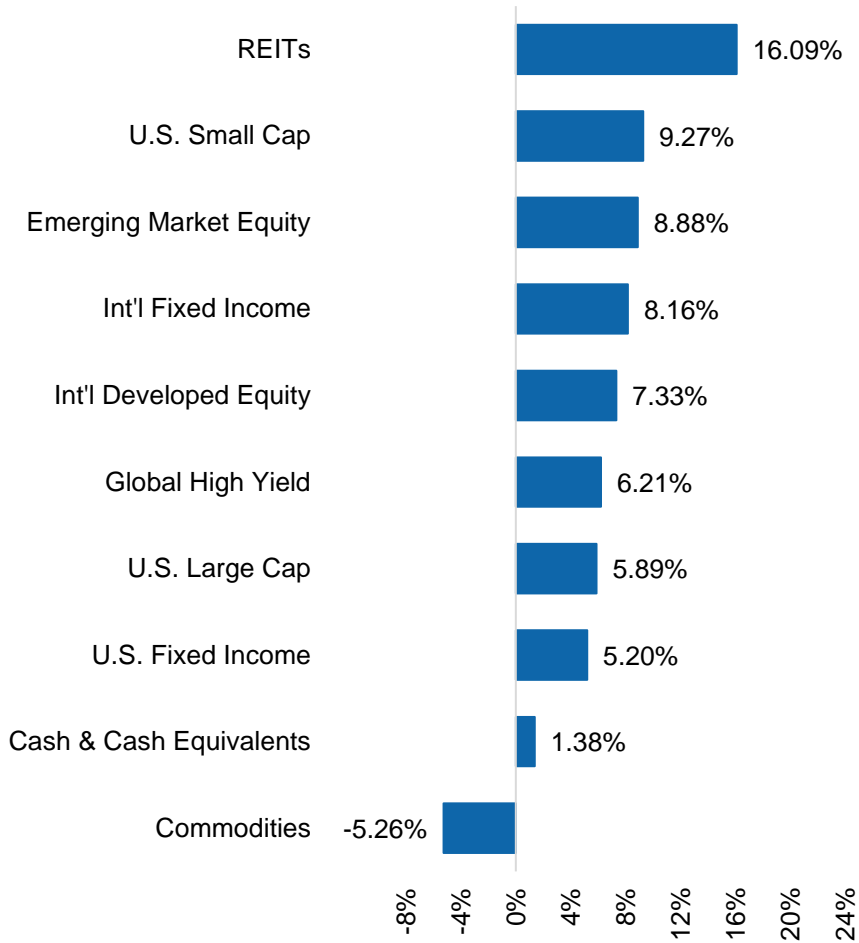
\*Sorted by Quarterly Returns

Source : S&P Dow Jones Indices, FTSE Russell, MSCI, NASDAQ, FactSet. As of 9/30/2024.

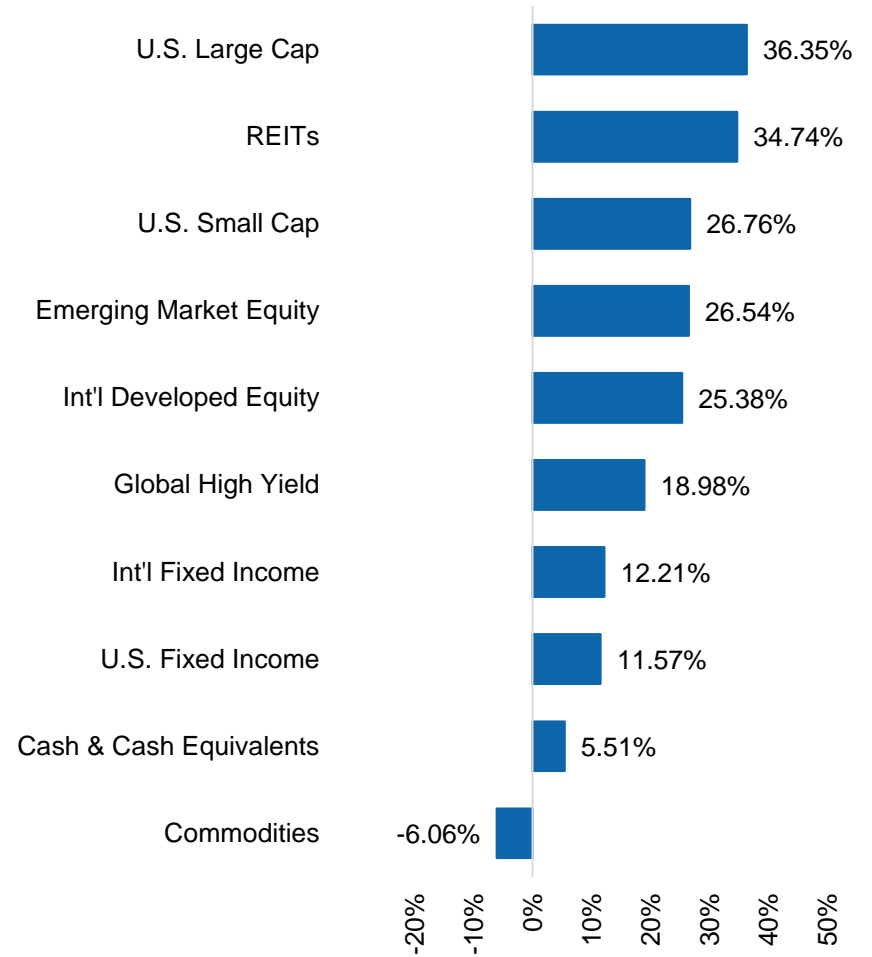


# Asset Class Returns

## Quarterly Returns

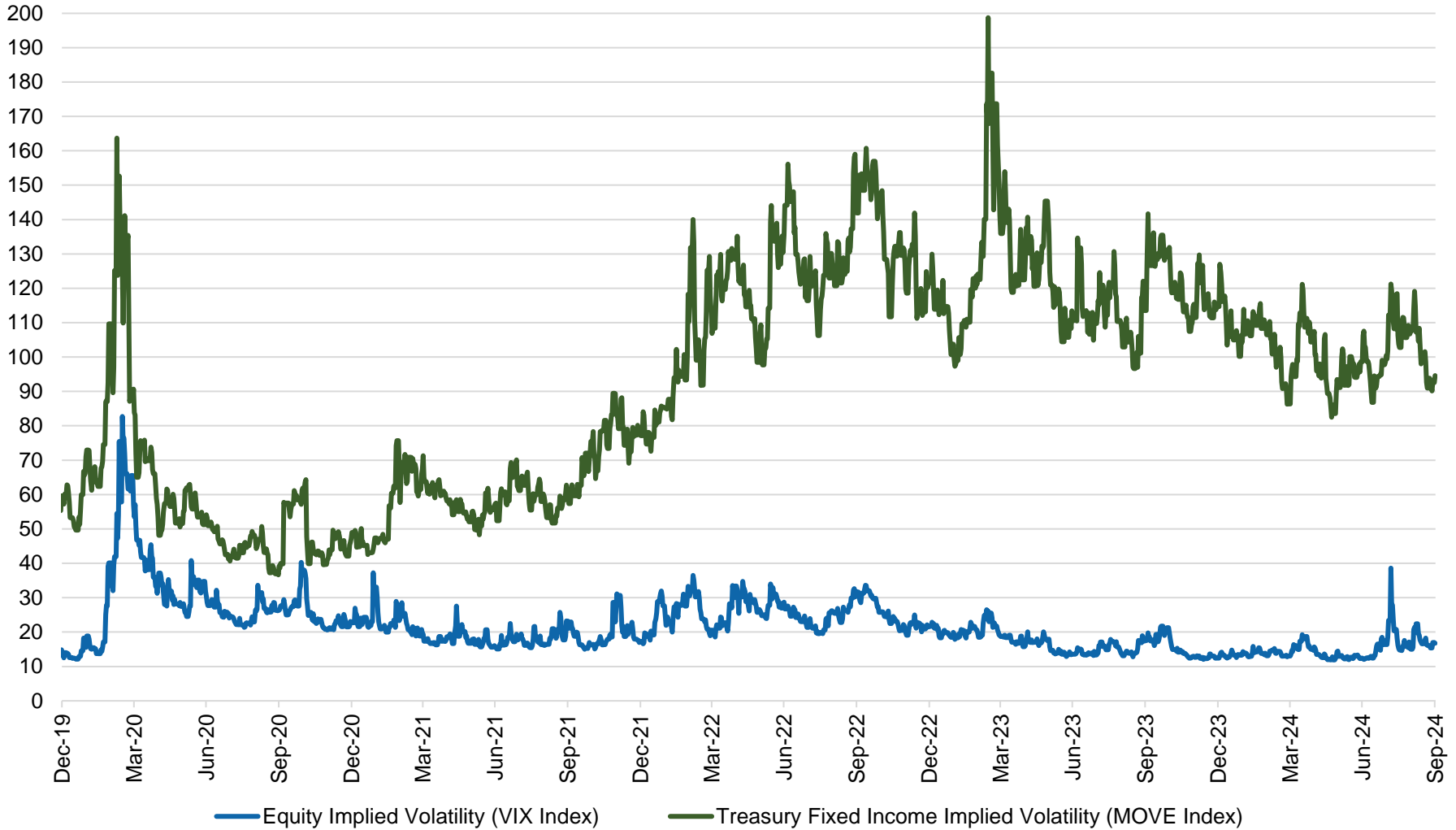


## Last 12 Months



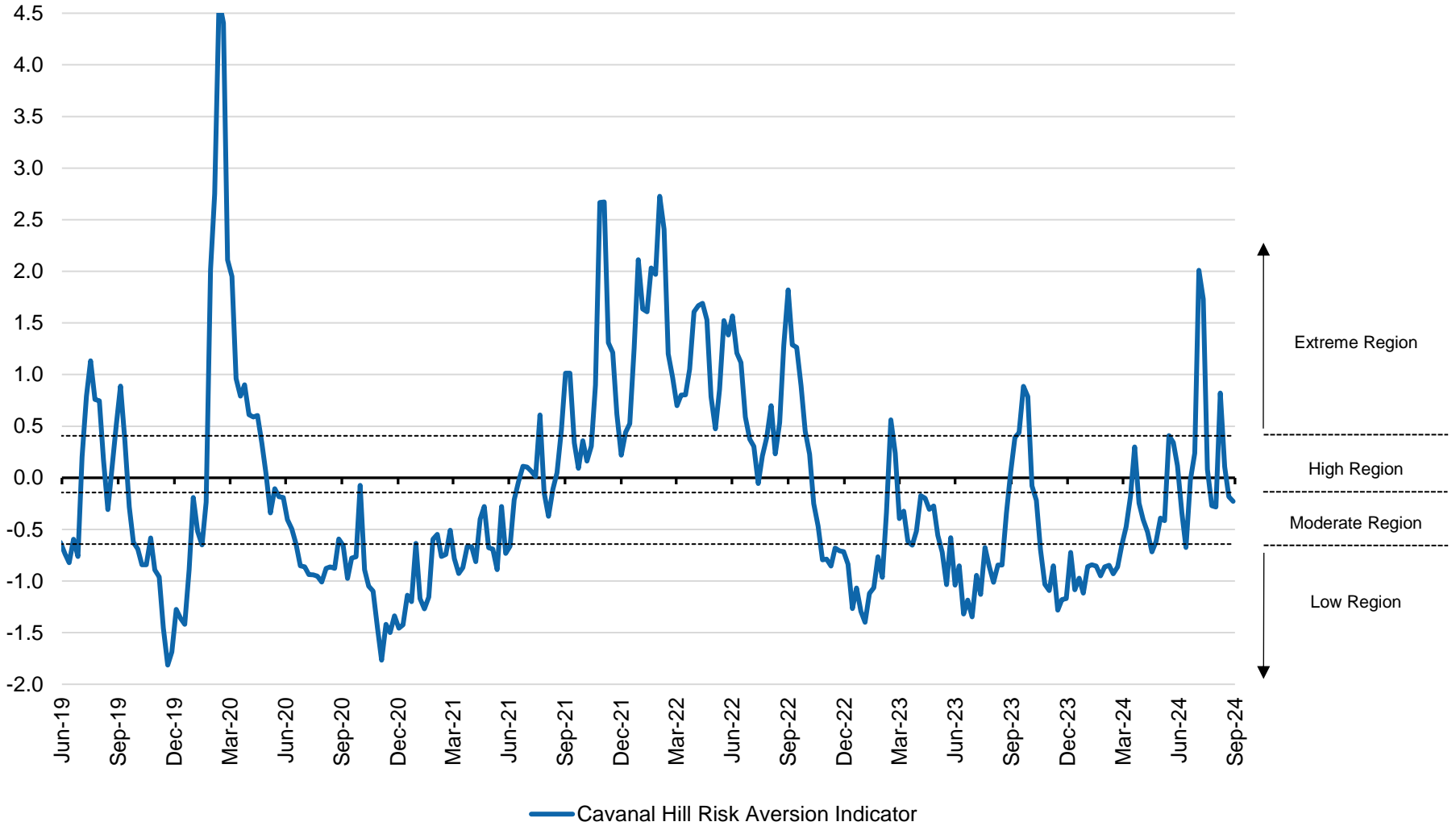
Source : S&P Dow Jones Indices, FTSE Russell, MSCI, NASDAQ, FactSet. As of 9/30/2024. <sup>1</sup>See appendix for index descriptions.

# Implied Volatility : Equity vs. Treasury Fixed Income



Source : ICE BofA, Bloomberg, CBOE, FactSet. As of 9/30/2024.

# Cavalan Hill Risk Aversion Indicator



Source : Cavalan Hill, Bloomberg. As of 9/27/2024. <sup>3</sup>See appendix for indicator description.

# U.S. Equity Market

# U.S. Equity Market Outlook

**1** Current forecasts call for low-teens earnings growth for the S&P 500 Index in 2025. To the extent those forecasts are achieved, we would characterize current equity valuations as “fair.”

**2** Market performance was more concentrated in Q2 with mega-cap stocks leading the way. Technology was the best performing sector by a wide margin followed by higher paying dividend sectors like utilities and telecommunications. Mid and small caps and commodity sensitive sectors had negative returns.

**3** Companies enjoyed more pricing power as inflation hit 40-year highs. As inflation continues to decline, however, we are monitoring the risk that lower inflation may limit pricing power and pressure corporate margins.

**4** The federal debt may begin to crowd out some investments and is a growing risk to financial market stability, yet neither party appears to be running on a platform of fiscal responsibility. In addition, uncertainty around the upcoming elections in November could have a bigger impact on markets.

# Equity Style Returns

## 3Q2024

	Value	Core	Growth
Large	9.43%	6.08%	3.19%
Mid	10.08%	9.21%	6.54%
Small	10.15%	9.27%	8.41%

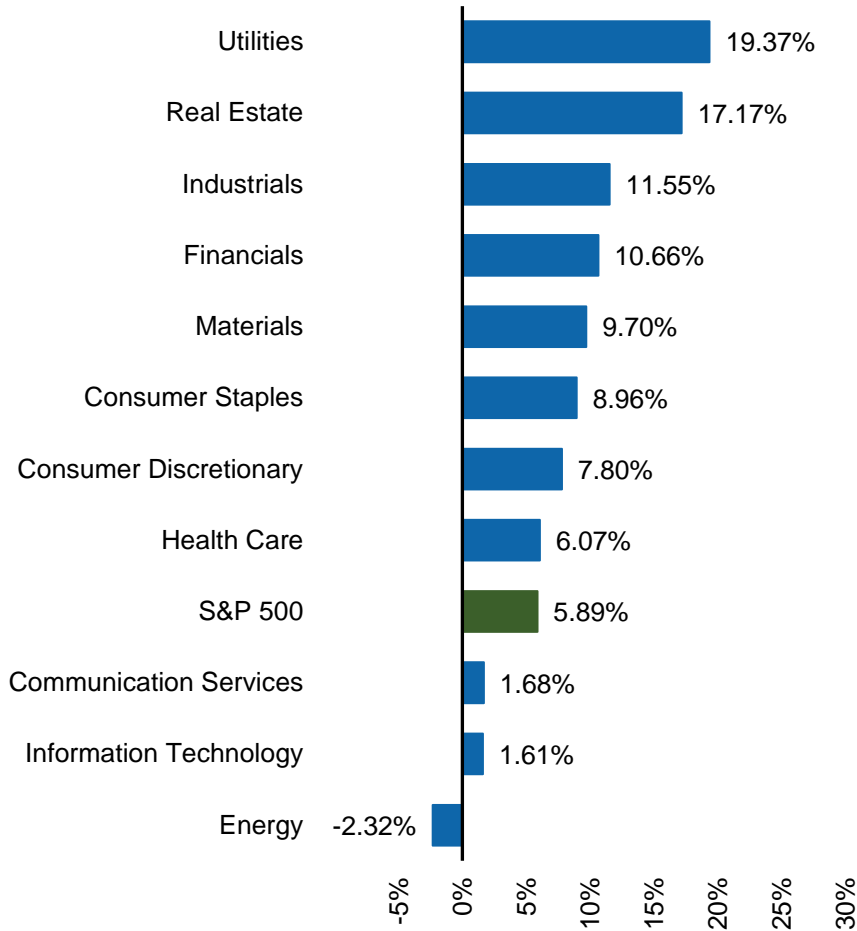
## Last 12 Months

	Value	Core	Growth
Large	27.76%	35.68%	42.19%
Mid	29.01%	29.33%	29.34%
Small	25.88%	26.76%	27.66%

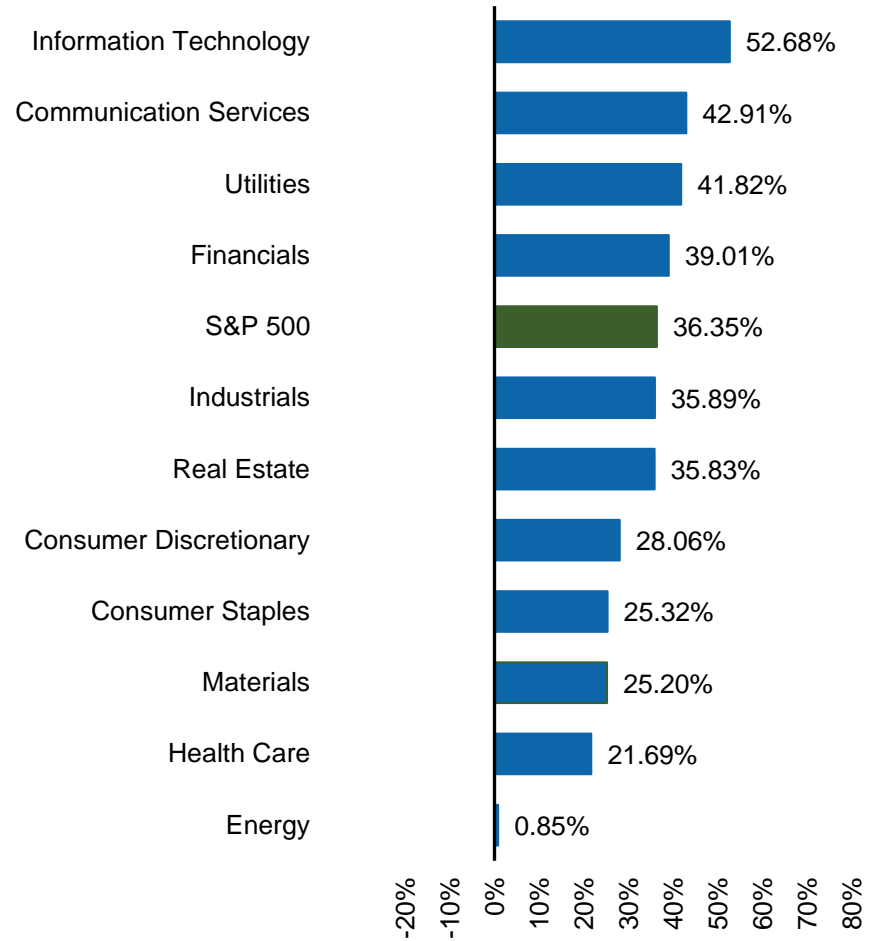
Source : S&P Dow Jones Indices, FTSE Russell, MSCI, Bloomberg Barclays, FactSet. As of 9/30/2024. <sup>1</sup>See appendix for index descriptions.

# S&P 500 Sector Returns

## Quarterly Returns



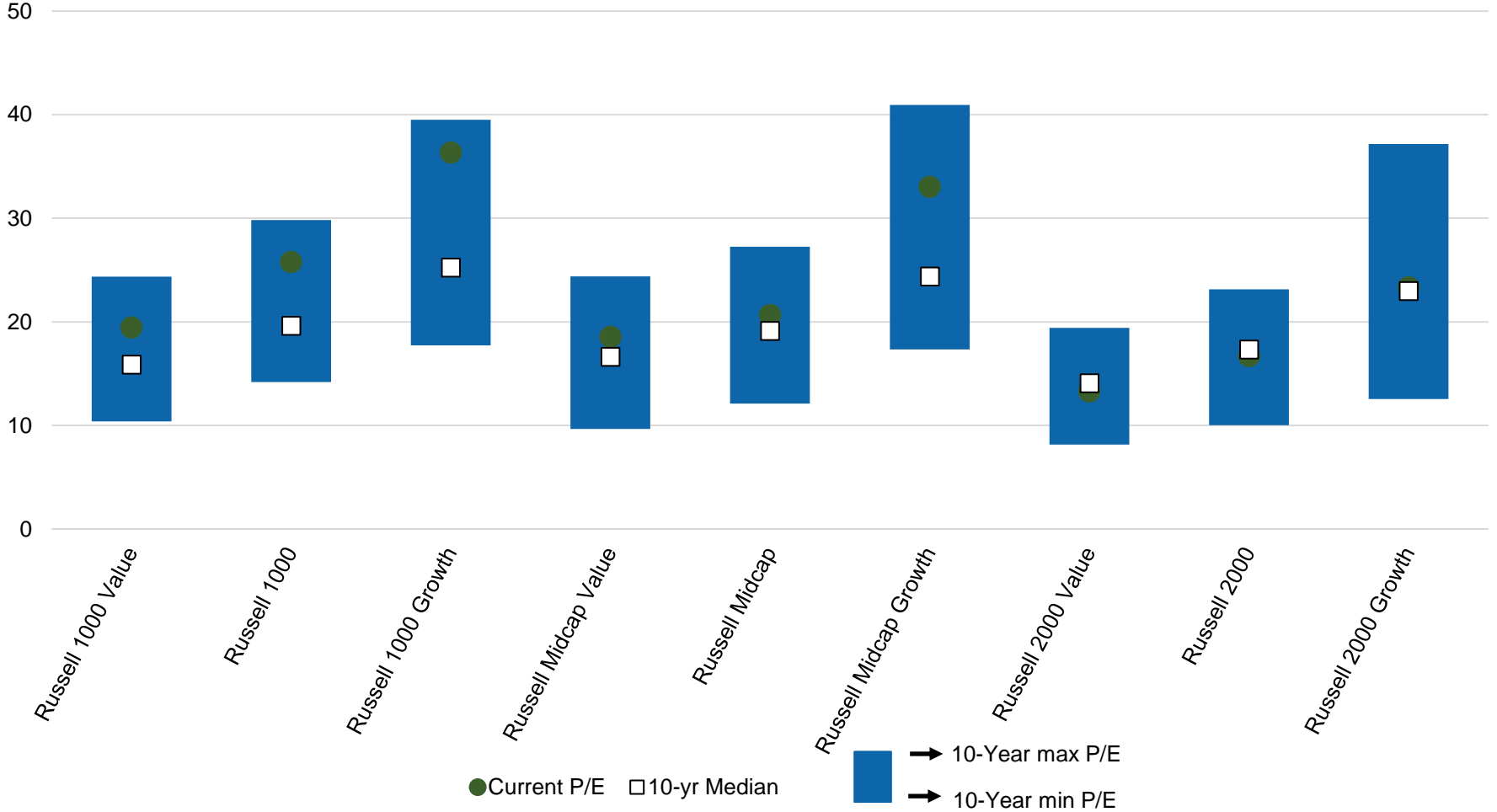
## Last 12 Months



Source : S&P Dow Jones Indices, FactSet. As of 9/30/2024.

# Equity Style Valuation

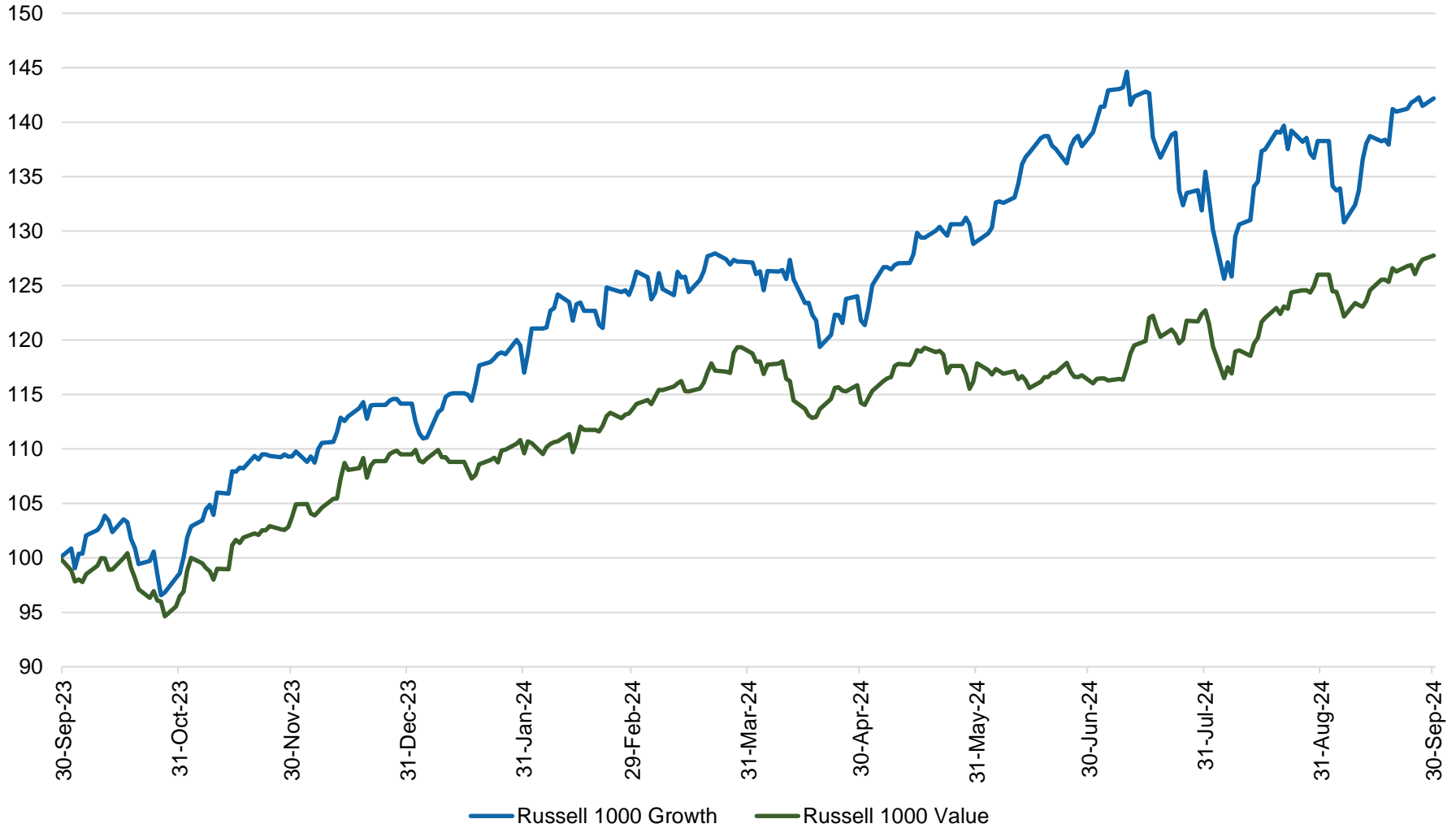
Last 12 Months P/E Ratios 10-Year High/Low (excludes negatives)



Source : FTSE Russell, FactSet. As of 9/30/2024.



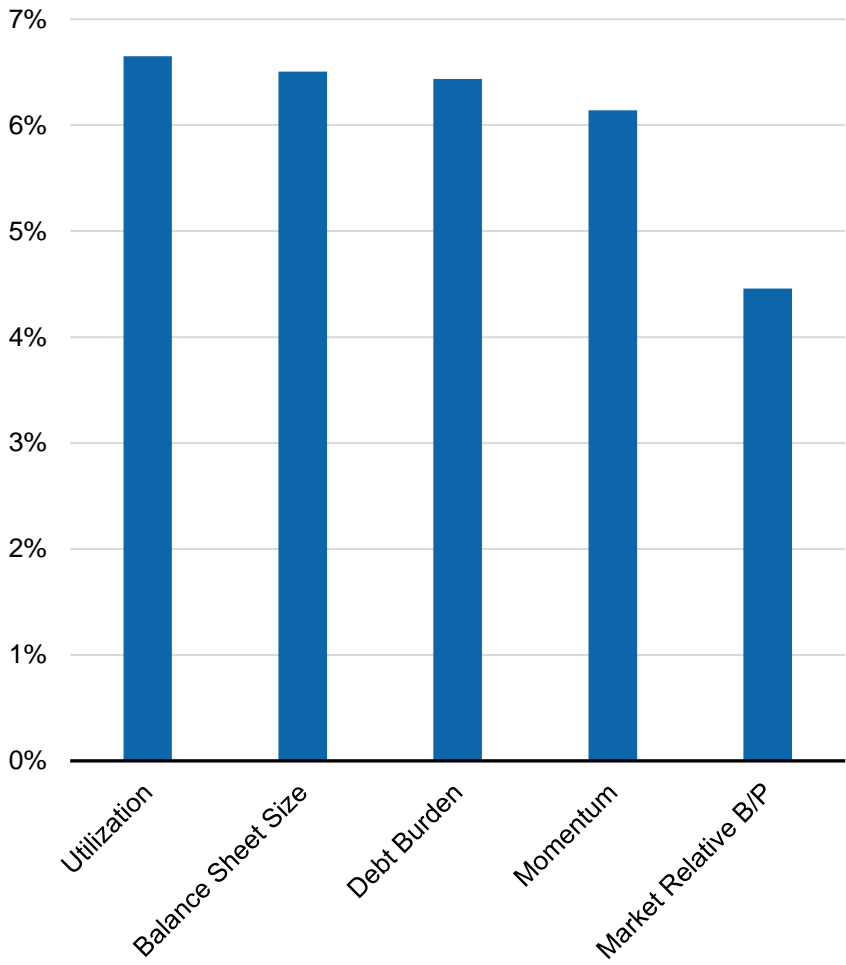
# Equity Style : Large Cap Growth vs Value



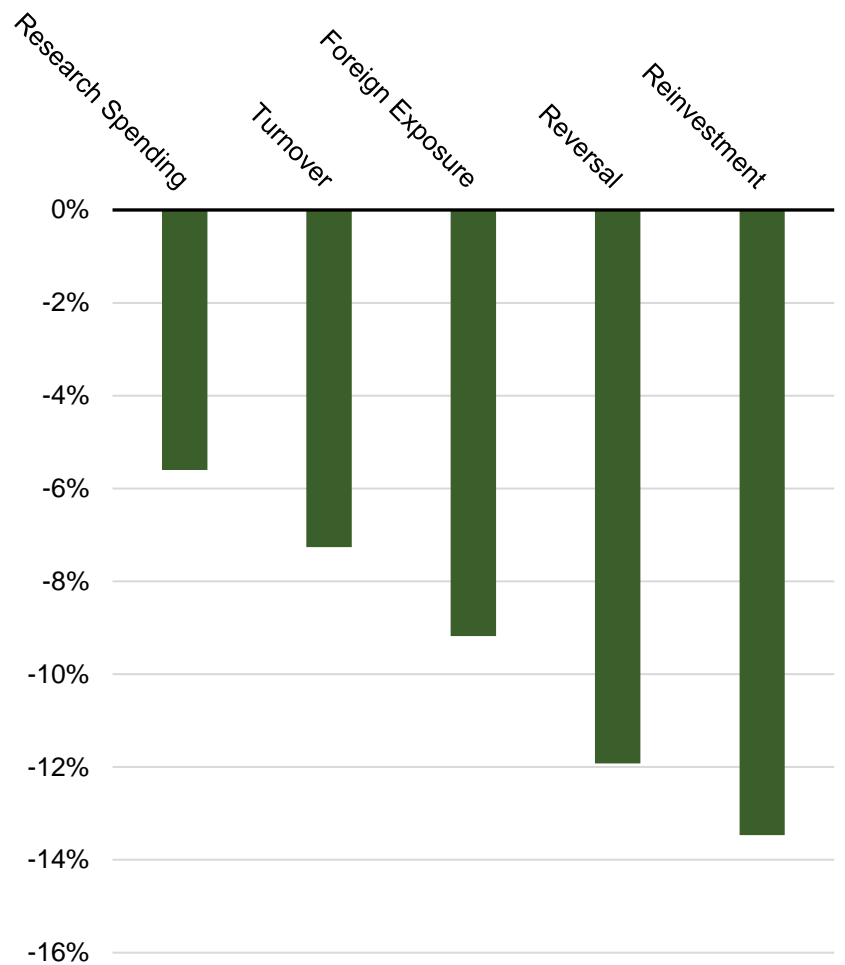
Source : FTSE Russell, FactSet. As of 9/30/2024.

# Trailing 12 Month Russell 1000<sup>®</sup> Factor Returns

Top 5 Factor Returns



Bottom 5 Factor Returns



Source : Cavanal Hill, FTSE Russell, FactSet. For the period 9/29/2023 to 9/27/2024. <sup>4</sup>See appendix for factor descriptions.

# Fixed Income

# U.S. Fixed Income Outlook

1

After a 50bp cut to the target Fed Funds rate in September, the Fed has indicated an additional 50bps in 2024 and 100bps in 2025. Market estimates are similar for 2024, but more aggressive in 2025, calling for 150bps of rate cuts.

2

As the Fed has become more comfortable with a tame inflation out look, it has shifted its focus to the other half of its mandate, supporting full employment. The Fed is clearly uncomfortable with further deterioration, and further weakness could fuel faster than expected rate cuts.

3

Credit spreads continue to ratchet tighter. Lower quality outperformed high-quality paper, while long duration handily beat short duration, as rates dropped sharply in the quarter.

4

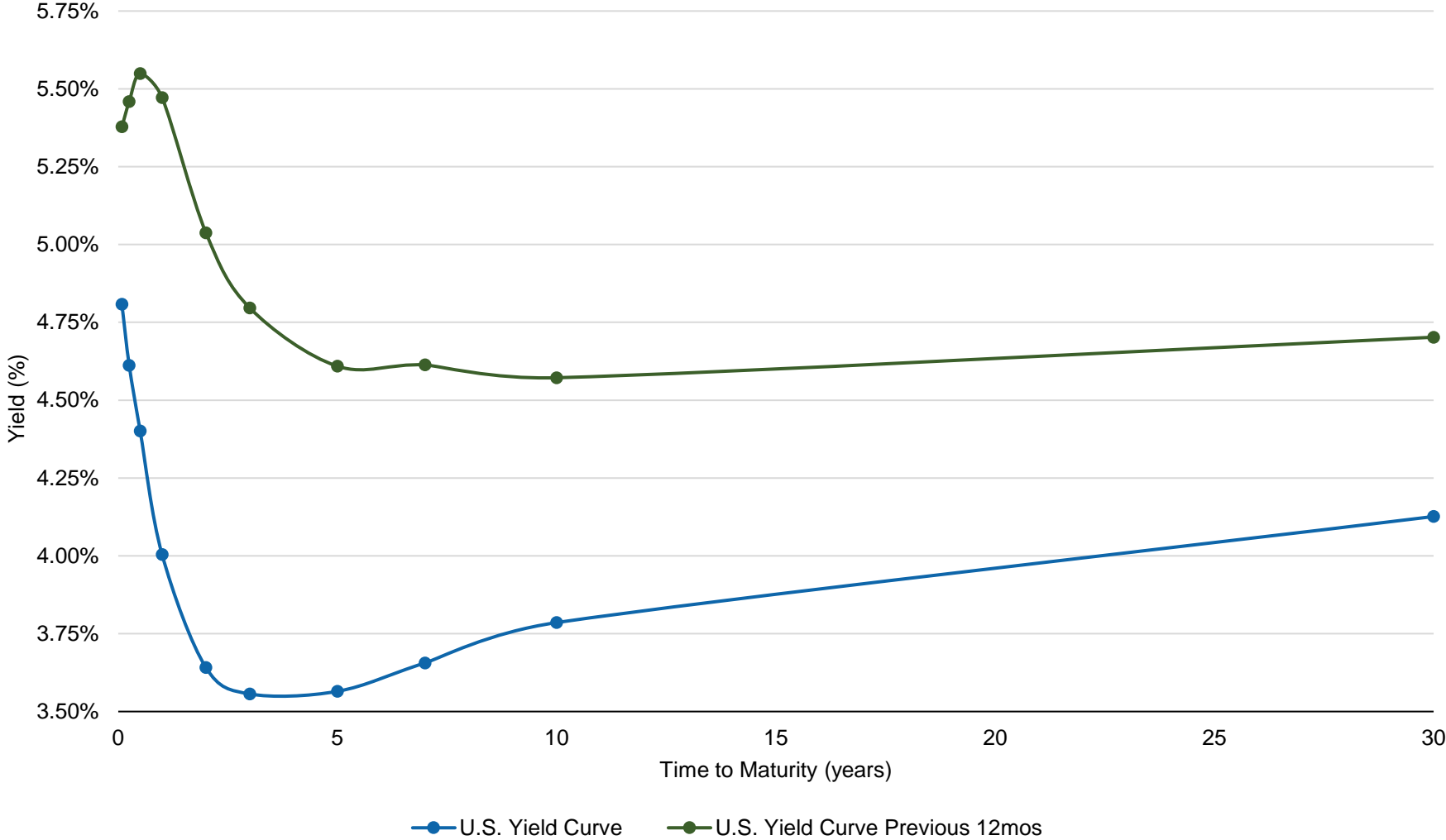
With credit spreads still hovering near cycle lows, investors should continue to take advantage of rallies and liquid market conditions to reduce exposure to lower quality credits.

# Fixed Income Returns as of 9/30/2024

	3Q2024	1 Year	3 Year (Ann.)
<b>Fixed Income Index Returns</b>			
BB Aggregate Index	5.20%	11.57%	-1.39%
BB Intermediate Aggregate Index	4.60%	10.39%	-0.30%
BB Municipal Index	2.91%	13.82%	0.38%
BB Treasury Index	4.74%	9.72%	-1.78%
BB Agency Index	3.40%	8.11%	0.13%
BB Corporate Index	5.84%	14.28%	-1.18%
BB Agency MBS Index	5.53%	12.32%	-1.20%
BB High Yield Index	5.28%	15.74%	3.10%

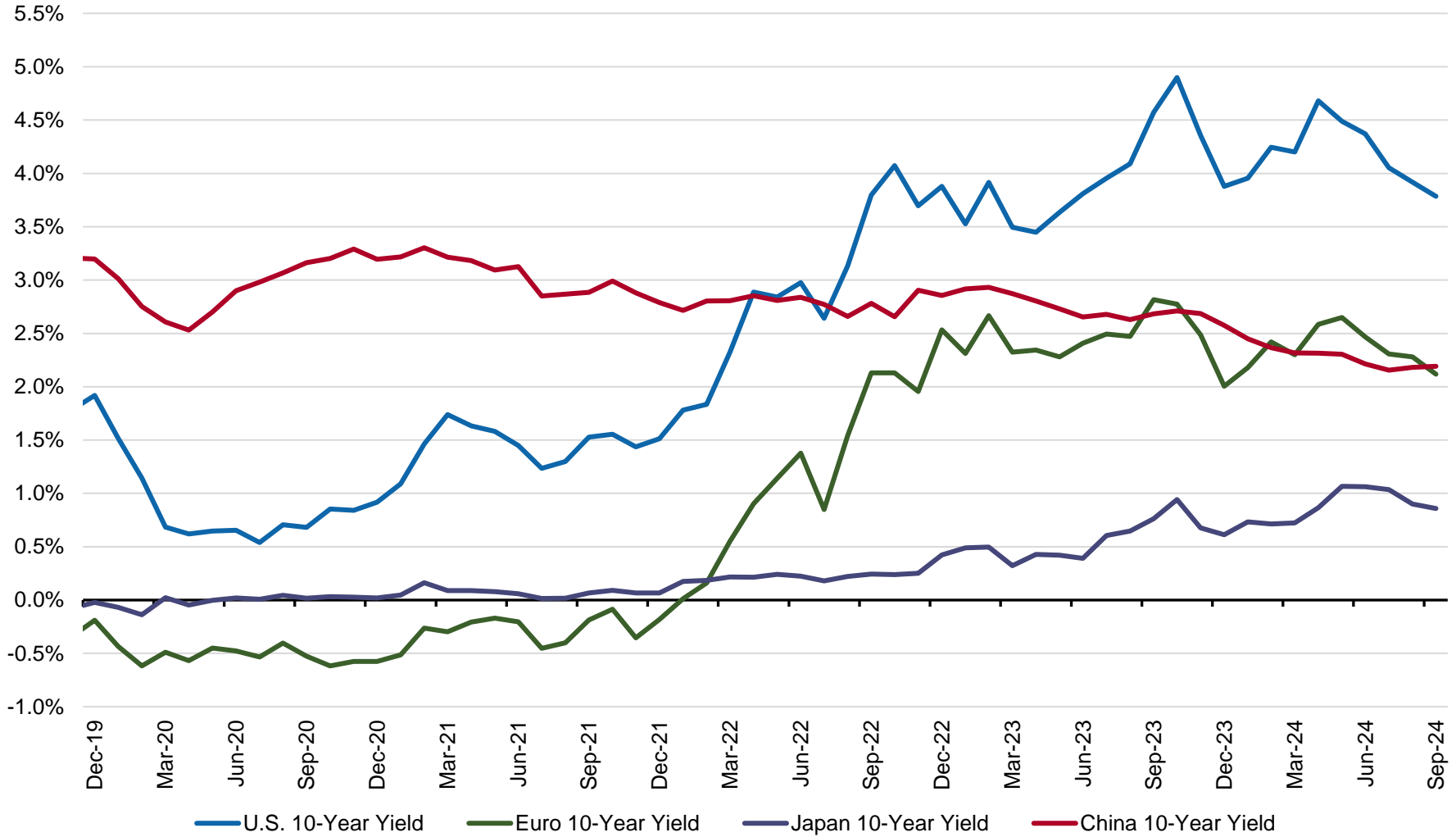
Source : Cavanal Hill, Bloomberg. As of 9/30/2024.

# The U.S. Treasury Yield Curve



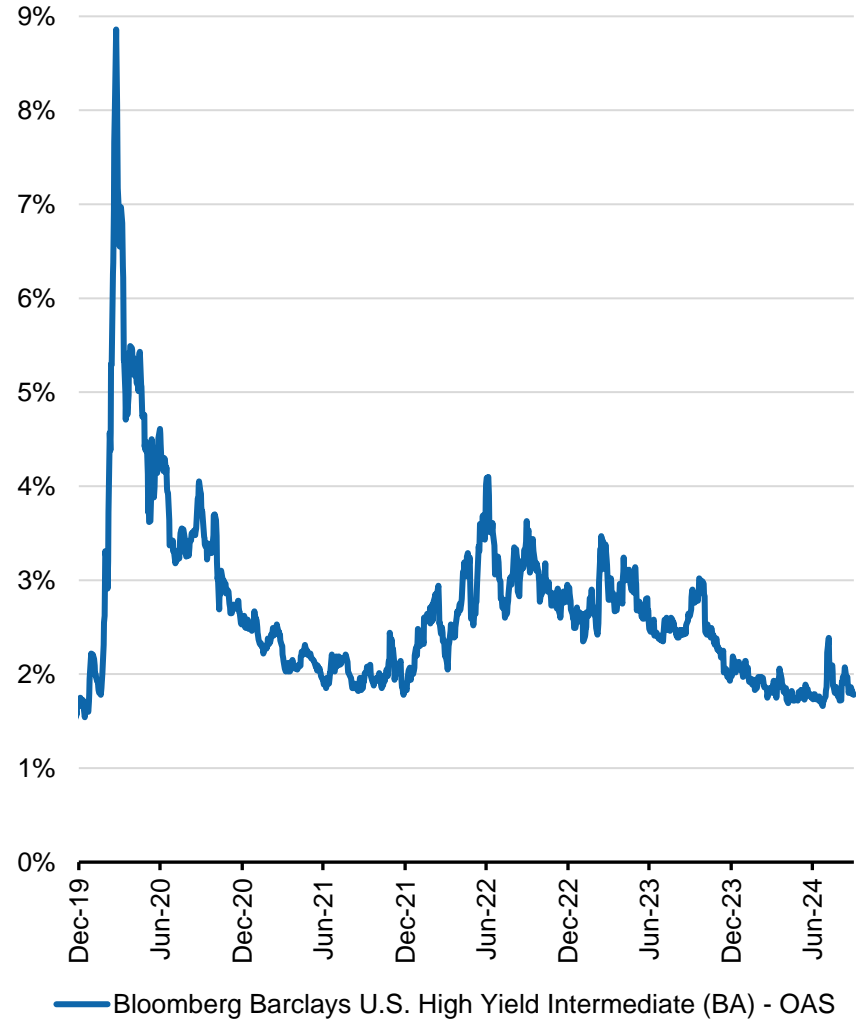
Source : Tullett Prebon Information, FactSet. As of 9/30/2024.

# Global 10 Year Yields



Source : Tullett Prebon Information, JP Morgan Chase, FactSet. As of 9/30/2024.

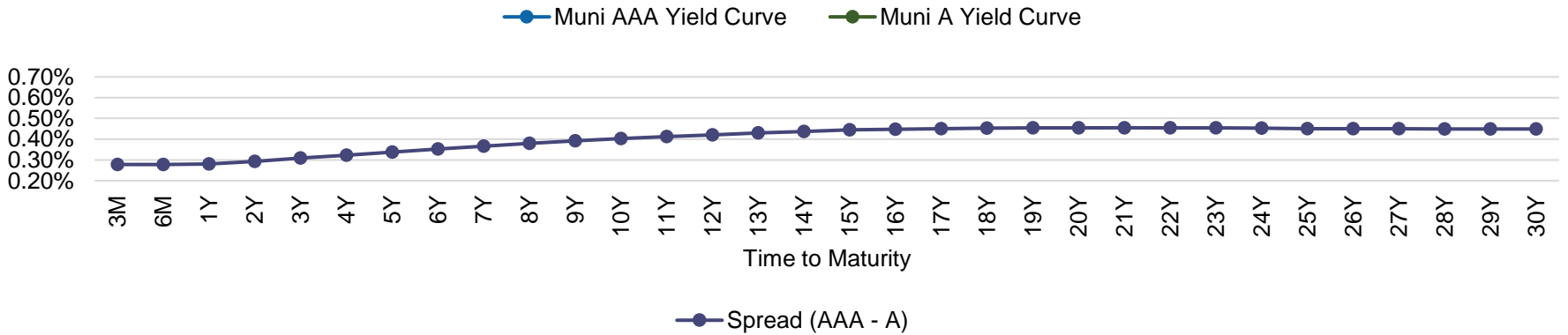
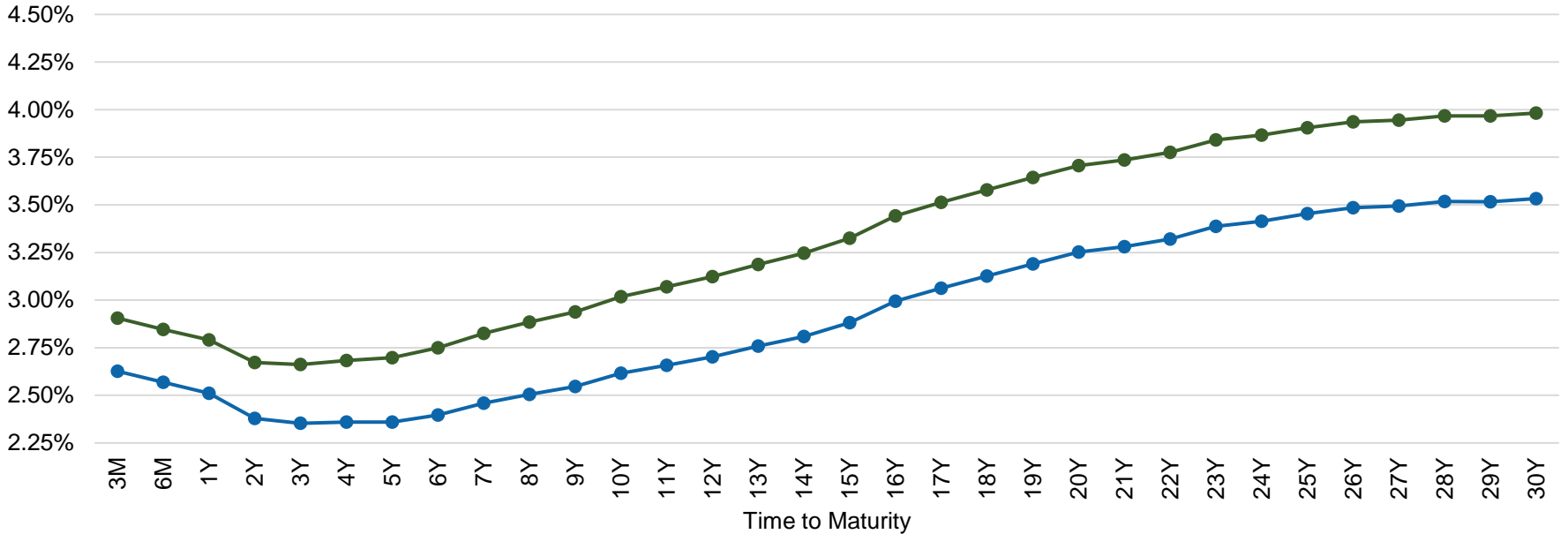
# U.S. Fixed Income Spreads



Source : Tullett Prebon Information, JP Morgan Chase, FactSet. As of 9/30/2024.



# Muni Yield Curve & Spread



Source : Cavanal Hill, Bloomberg. As of 9/30/2024.

# 1 Appendix : Asset Class & Equity Style Benchmarks

Asset Class & Equity Style	Benchmark
U.S. Large Cap	S&P 500
U.S. Small Cap	Russell 2000
Int'l Developed Equity	MSCI EAFE
Int'l Emerging Markets	MSCI EM
Commodities	S&P GSCI
U.S. Fixed Income	Barclays U.S. Aggregate
Global Fixed Income	Barclays Global Aggregate
Global Fixed Income ex. U.S.	Barclays Global Aggregate ex. U.S.
Global High Yield	Barclays Global High Yield
U.S. REITs	FTSE NAREIT All Equity REITs
Cash & Cash Equivalents	Barclays 3-Month T-Bill
Large Value	Russell 1000 Value
Large Core	Russell 1000
Large Growth	Russell 1000 Growth
Mid Value	Russell Midcap Value
Mid Core	Russell MidCap
Mid Growth	Russell Midcap Growth
Small Value	Russell 2000 Value
Small Core	Russell 2000
Small Growth	Russell 2000 Growth

## 2 Appendix : Cavanal Hill Leading Economic Indicator

The **Cavanal Hill Leading Economic Indicator** is a proprietary model that the Cavanal Hill Quantitative Group uses in making macroeconomic assessments and forecasts. It is a dynamically weighted combination of the following data items:

Data Item	Source
10 Year Breakeven	Bloomberg
Capacity Utilization	US Federal Reserve
Conference Board LEI	Conference Board
Consumer Sentiment	Conference Board
ECRI LEI	Economic Cycle Research Institute
Existing Home Sales	National Association of Realtors
Industrial Production	US Federal Reserve
ISM Manufacturing	Institute for Supply Management
ISM Manufacturing New Orders	Institute for Supply Management
ISM Services	Institute for Supply Management
ISM Services New Orders	Institute for Supply Management
Jobless Claims	US Dept. of Labor
Multi Housing Permits	US Census Bureau
Real Retail Sales	US Census Bureau
Retail Sales ex Autos	US Census Bureau
Single Housing Permits	US Census Bureau
Small Business Optimism	NFIB
Temp Payrolls	US Dept. of Labor

### 3 Appendix : Cavanal Hill Risk Aversion Indicator

The **Cavanal Hill Risk Aversion Indicator** is a proprietary model that the Cavanal Hill Quantitative Group uses to assess how markets are pricing risk and the potential impacts of shifts in risk aversion. It is a dynamically weighted combination of the following data items:

Data Item	Source
AA/AAA Yield Spread Over Treasuries	Moody's, Bloomberg
Ba/B Yield Spread Over Treasuries	Bloomberg
Baa Yield Spread Over Treasuries	Bloomberg
BBB Yield Spread Over Treasuries	Bloomberg
St. Louis Federal Reserve Bank Financial Stress Index	US Federal Reserve, Bloomberg
Euro Area Systematic Stress Indicator Composite Index	ECB, Bloomberg
Euro Stoxx 50 Volatility Index	Deutsche Borse, Goldman Sachs, Bloomberg
Euro/US Dollar Exchange Rate	Bloomberg
Europe 5Y Generic Corporate CDS Spread	Markit, Bloomberg
Global Financial Stress Index	BOA Merrill Lynch, Bloomberg
Japan 5Y Generic Corporate CDS Spread	Markit, Bloomberg
Japanese Yen/US Dollar Exchange Rate	Bloomberg
KOSPI 200 Volatility Index	Bloomberg
S&P 500 Index P/E	Bloomberg
South Korean Won/US Dollar Exchange Rate	Bloomberg
SPX Volatility Index (VIX)	CBOE, Bloomberg
Swiss Franc/US Dollar Exchange Rate	Bloomberg
US 5Y Generic Corporate CDS Spread	Markit, Bloomberg
US Dollar Index	Bloomberg
Volatility Index Japan	CSFI-Osaka Univ., Bloomberg
Westpac Japan Financial Stress Index	Westpac Strategy Group, Bloomberg

## 4 Appendix : Cavanal Hill Factor Returns

**Cavanal Hill Factor Returns** are built using the proprietary factor definitions that the Cavanal Hill Quantitative Group uses to assess market trends and construct portfolios. Raw data is provided by FactSet and the factors are constructed and tested using the FactSet Alpha Testing tool. Currently, there are 20 factors. The factor names and a short description of each are listed below.

Factor	Description
Accruals	Ranks according to how heavily a company relies on the use of accruals.
Debt Burden	Ranks according to leverage and/or interest burdens relative to income.
Earnings Growth	Ranks according to historical growth in earnings.
Market Relative E/P	Ranks according to the stock's E/P relative to the entire market.
Sector Relative E/P	Ranks according to the stock's E/P relative to its' sector peers.
Foreign Exposure	Ranks according to how much of a company's business is foreign or domestic.
Margin Expansion	Ranks according to historical growth in profit margins.
Momentum	Ranks according to stock performance over the prior 12 month period (excluding the most recent month).
Profitability	Ranks according to profit margins.
Reinvestment	Ranks according to capex spending relative to revenues.
Research Spending	Ranks according to R&D spending relative to revenues.
Reversal	Ranks according to stock performance over the prior 1 month.
Sales Growth	Ranks according to historical growth in sales/revenues.
Balance Sheet Size	Ranks according to total balance sheet assets.
Market Capitalization	Ranks according to total market capitalization.
Turnover	Ranks according to sales relative to total assests.
Utilization	Ranks according to margin growth relative to growth in other balance sheet items (e.g. debt, expenses, etc.)
Market Relative B/P	Ranks according to the stock's B/P relative to the entire market.
Sector Relative B/P	Ranks according to the stock's B/P relative to its' sector peers.
Volatility	Ranks according to stock price volatility.

# Disclosures

Cavanal Hill Investment Management, Inc. is an SEC registered investment adviser and a wholly-owned subsidiary of BOKF, NA, a wholly-owned subsidiary of BOK Financial Corporation, a financial holding company ("BOKF"). BOKF, NA serves as the custodian for the Cavanal Hill Funds. BOKF holdings also include Cavanal Hill Distributors, Inc., member FINRA, the distributor for the Cavanal Hill Funds (the Funds). SEC registration does not imply a certain level of skill or training.

Cavanal Hill Distributors, Inc. is a wholly-owned subsidiary of BOK Financial Corporation, and an affiliate of BOKF, NA and Cavanal Hill Investment Management, Inc.

This report is not to be considered a recommendation of Cavanal Hill's investment management services, any particular security, strategy or investment product, nor is it intended to provide personal investment advice. It does not take into account any specific investment objectives, financial situations, or particular needs of any specific person who may receive this report. Investors should seek financial advice regarding the appropriateness of investing in any securities, other investment or investment strategies discussed in this report and should understand that statements regarding future prospects may not be realized.

The information provided in this presentation is for informational purposes only and is not an offer to sell or a solicitation of an offer to buy any securities in any jurisdiction. The information contained herein has been obtained from sources believed to be reliable, but not guaranteed. Performance information is historical and does not guarantee future results. Investors should note that income from such securities or other investments, if any, may fluctuate and that price or value of such securities and investments may rise or fall. Investments are not insured by the FDIC and are not guaranteed by Cavanal Hill or any bank, including any banking affiliates of Cavanal Hill. Investments are subject to risks, including the possible loss of the principal amount invested. Past performance does not guarantee future results. Investment return and principal value will fluctuate so that redeemed shares may be worth more or less than their original cost. Current performance may be lower or higher than the performance data quoted. All performance information contained herein is hypothetical only and is not actual past performance of any security or any actual composite or actual account specific performance. Investing in these strategies contains not only normal market risks, but geopolitical risk, currency risk, interest rate risk, credit risk and other unquantifiable and unknown risks.

This document contains forward-looking statements that are based on management's beliefs, assumptions, current expectations, estimates, and projections, the securities and credit markets and the economy in general. Words such as "anticipates," "believes," "estimates," "expects," "forecasts," "plans," "projects," variations of such words and similar expressions are intended to identify such forward-looking statements. Management judgments relating to and discussion of the value and potential future value or performance of any security, group of securities, type of security or market segment involve judgments as to expected events and are inherently forward-looking statements.

These statements are not guarantees of future performance and involve certain risks, uncertainties and assumptions that are difficult to predict with regard to timing, extent, likelihood and degree of occurrence. Therefore, actual results and outcomes may materially differ from what is expressed, implied, or forecasted in such forward-looking statements. The potential realization of these forward-looking statements is subject to a number of limitations and risks. Cavanal Hill does not undertake any obligation to update, amend, or clarify forward-looking statements, whether as a result of new information, future events or otherwise. This report may not be reproduced, redistributed, retransmitted or disclosed, or referred to in any publication, in whole or in part, or in any form or manner, without the express written consent of Cavanal Hill. Any unauthorized use or disclosure is prohibited. Receipt and review of this research report constitutes your agreement not to redistribute, retransmit, or disclose to others the contents, opinions, conclusion, or information contained in this report. For questions about this report, please contact Thomas (Wes) Verdel (918) 588-6107.